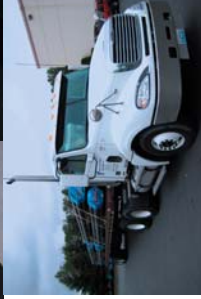


**PUGET SOUND PIPE AND SUPPLY CO.**  
Providing Quality Pipe, Valves & Fittings Since 1917



**Additional Services**

- Web Site with E-Commerce.
- Total Quality Management.
- Integrated Supply Contracts.
- Projects Tracking Systems.
- Web based MTR Retrieval Software.
- Shop Fabrication and Valve Actuation & Automation Services.

**Extensive Experience with Supplying...**

- Large Multinational Prime Contracting and Engineering Firms.
- Major Oil, Gas & Pipeline Companies.
- Nuclear Facilities Piping Products.
- Fossil Fuel and Nuclear Power.
- Shipyards and Vessel Construction.
- Infrastructure Construction & Rebuild.
- Pulp and Paper.

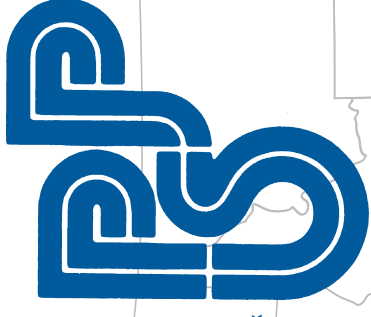
**COMMITMENT TO QUALITY THROUGH SERVICE IS OUR NUMBER ONE PRIORITY!**

**CORPORATE OFFICE**

7816 South 202nd Street  
Kent, Washington 98032  
TEL: 800-289-7771  
FAX: 253-796-9355



e-mail: [puguet@pspipe.com](mailto:puguet@pspipe.com)  
Website [www.PugetPipe.com](http://www.PugetPipe.com)



**PUGET SOUND PIPE AND SUPPLY**  
PROVIDING QUALITY PIPE, VALVES & FITTINGS  
SINCE 1917

[WWW.PUGETPIPE.COM](http://WWW.PUGETPIPE.COM)



**ANCHORAGE**



**CORPORATE KENT**  
WASHINGTON  
7816 S. 202ND STREET  
KENT, WA 98032  
(253) 796-9350  
(253) 796-9355 (FAX)

**ANCHORAGE ALASKA**

2120 SPAR AVENUE  
ANCHORAGE, AK 99501  
(907) 277-7473  
(907) 277-9656 (FAX)

**KENAI ALASKA**

42436 KENA SPIR HWY  
KENAI, AK 99611  
(907) 283-6142  
(907) 283-5629 (FAX)

**BURLINGTON WASHINGTON**

535 PEASE ROAD  
BURLINGTON, WA 98322  
(360) 707-9350  
(360) 707-9355 (FAX)

**SEATTLE WASHINGTON**

4800 DENVER AVE S.  
SEATTLE, WA 98134  
(206) 764-9300  
(206) 764-4802 (FAX)

**KELSO WASHINGTON**

2680 COVEMAN PARK DR.  
KELSO, WA 98626  
(360) 501-6466  
(360) 501-6616 (FAX)

**KENNEWICK WASHINGTON**

5950 W. BRINKLEY ROAD  
KENNEWICK, WA 99338  
(509) 783-0474  
(509) 736-1375 (FAX)

**VANCOUVER WASHINGTON**

2100-A KOTORUK WAY  
VANCOUVER, WA 98660  
(360) 816-1026  
(360) 816-1103 (FAX)

**PORTLAND OREGON**

16662 NE WASON ST.  
PORTLAND, OR 97230  
(503) 261-9350  
(603) 261-9355 (FAX)

**LOS ANGELES CALIFORNIA**

7665 GRANADA DRIVE  
BUENA PARK, CA 90661  
(714) 739-7100  
(714) 739-7007 (FAX)



## PIPE

**ASTM A106**  
Seamless Steel Pipe  
1/8" - 24"  
All Schedules

**ASTM A53**  
Gr. A & B, Type F  
ERW & CW  
Welded Steel Pipe  
1/8" - 24"  
All Schedules

**API 5L**  
Gr. B & X Grades  
Seamless, ERW &  
DSAW Steel Pipe  
All Schedules

**ASTM A333 Gr. 6**  
Transition Temperature  
Controlled Steel Pipe  
1/2" - 24"  
All Schedules

**ASTM A312**  
Stainless Steel Pipe  
Welded & Seamless

**Copper Tube**

**No-Hub Pipe**

**S/S Instructube**  
ASTM A269BA Stainless  
Steel, Pipe, Welded &  
Seamless

**Sprinkler Pipe**

**Specialty Pipe**  
Handrail, Pickled & Oiled, Galvanized Seamless,  
A335, Monel, Inconel, Copper Nickel, Brass, Copper, PVC  
Stainless Steel Grades: 321, 317, A774, Duplex,  
AWWA C-200 SW PIPE, A301 RCCP and CCP

## FLANGES

**ASTM A105**  
1/2" & Larger Steel  
All Pressures  
Slip On, Weld Neck  
Socket Weld & Blind  
Threaded & Lap Joint

**ASTM A350 LF2 / A707 All Classes**  
Low Temperature/  
High Yield  
1/2" & Larger  
All Pressures  
Neck

**ASTM A182**  
Socket Weld & Blind  
Stainless Steel & Alloy  
1/2" & Larger  
All Pressures

**ASTM A350 LF2 / A707 All Classes**  
Galperli, Buffalo Flange,  
National Flanges, Weldband,  
DL Flange

**ASTM A350 LF2 / A707 All Classes**  
Galperli, Western Forge & Flange,  
Metalfab, Federal Flange,  
Custom Alloy

Western Forge, Texas Metals,  
Galperli, Enlin, Maus

Savage Machine,  
Hendrix Steel,  
Gray Loc, Galperli  
Hub Connectors

## VALVES

**Cast Steel**  
150# - 1500# Flanged  
Gate, Globe, & Check  
Below Seal & Pressure  
Seal

**Forged Steel**  
150# - 2500#  
Flanged, Socket Weld  
Threaded, Bellow Seal

**Ball Valve**  
Trimunion, Floating Ball  
Neway, Jamesbury/Metso,  
Solder  
Bronze, Steel, Stainless  
& Alloys

**Butterfly**  
Commercial & High  
Performance, Food Grade  
Lag, Water & Grooved

**Bronze & Iron**  
125# - 300# Flanged  
Threaded & Solder  
Gate, Globe, & Check

**Plug Valve**  
Flanged & Threaded

**Checks**  
Water & Globe

**Marine Valve**  
Silbraze & Flanged  
Navy & Commercial

**Instrumentation  
Valves**

**Knife Gate**

Crane, Tong Yung (TY), DSI,  
Newco, Kitz, Bonney Forge,  
Milwaukee, Powell, Velan,  
Neway, Walworth, Newco, Sharpe

Bonney Forge, OMB, DSI,  
Newco, RP&C, Sharpe

Milwaukee, PRV, Jage-Fla,  
Neway, Jamesbury/Metso,  
Apollo, KF Industries, Grove  
Nutron, Perrar, Jonar, Flow-Tek,  
OMB, Quadrant, Sharpe

Milwaukee, Jamesbury/Metso,  
Centerline, Bray Valve & Controls,  
Flowstat, Xomox, Del Tech Controls,  
Solent & Pratt, ABZ, Quadrant, Sharpe

Milwaukee, Crane,  
Powell, Apollo, Walworth

Christiansen, Resun,  
Walworth, Xomox

Noz-check, Dnocheck, Milwaukee,  
Top Flow, Goodwin, Keeckley

Milwaukee, Williams

Superlok, TK-SCT

Fabri, Fabricast, Keeckley, Warren

Puget Sound Pipe & Supply is proud to carry Superlok stainless and brass valves and fittings for all instrumentation needs. Superlok double ferrule fittings and valves carry all required certifications, including ISO 9001, DNV, and APL. Superlok successfully meets all the petrochemical, semiconductor, marine and mechanical technical and operational needs. Superlok is 100% interchangeable with Swagelok fittings and provides all of the technical and MTR documentation should your job require it.

### Viega Press Fitting Systems for Marine and Commercial Applications

- Progress - Copper, for marine and commercial service
  - Seapress - Copper/Nickel, for marine service
  - Snapress Inox - Stainless Steel, for marine service
  - Pressing tools for solder or rent
  - Metric tubing in both copper/nickel and stainless steel for use in the seapress or snapress systems
- Puget Sound Pipe & Supply** provides customers with a variety of value added services designed to streamline their purchasing functions. **PSP's** Website now features an **E-commerce Order Desk**. This allows our customers to view account information, order products and check the status of orders instantly.

## FITTINGS

**Malleable & Cast Iron**  
Fittings & Flanges  
Black & Galvanized  
Smith Cooper

**No-Hub Fittings  
& Couplings**  
AB&I, Mission

**ASTM A105**  
Forged Steel Fittings  
Socket Weld & Threaded  
2000# - 9000#  
Forged Outlets - Threaded  
Socket Weld & Butt Weld  
Phoenix Capitol

**ASTM A350 LF2 & A707 All Classes**  
Low Temperature /  
High Yield Fittings  
Forged Outlets - Threaded  
Socket Weld & Butt Weld  
3000# - 9000#  
Forged Outlets - Threaded  
Socket Weld & Butt Weld

**ASTM A234 A860 & MSS SP75**  
Grade B & C / High Yield  
& Alloy Weld Fittings  
1/2" & Larger  
All Schedules

**ASTM A420 WPL6**  
Low Temperature Weld  
Fittings  
1/2" & Larger  
All Schedules

**Stainless Steel**  
Forged, Cast & Butt Weld  
A182, A351, A403

**Brass**  
150# Threaded  
1/8" - 3"

**Marine**  
Bronze Silbraze  
Grooved & Face Fed  
CU/NL, Stainless

**Grooved**  
Vicaltic

**Copper Fittings**  
Elkhart, Viega, Elkhart Xpress

**Instrumentation  
Fittings**  
Superlok, TK-SCT

Anvil, Ward Mfg.,  
Smith Cooper

Bonney Forge, Penn Machine,  
Westbrook Manufacturing, WFI,  
Phoenix Capitol

Bonney Forge, Penn Machine,  
Westbrook Manufacturing,  
WFI

Grade B & C / High Yield  
Mills Iron Works, Weldband, Camadoil,  
Howaco, Awaji, Steel Forgings,  
All Schedules

Custom Alloy, Erno Fittings,  
US Fittings, Sweco, Camadoil,  
WFI, Tecubi/Racorditi, TFA,  
EZE Flow

Penn Machine, Felter Bros., Capital/Comco,  
Schulz, Flowline, Gerfin, Merit Brass, Bonney  
Forge, Taylor Forge, FlowMac, TK Bend

Merit Brass

Lee Brass, Viega

Our fully implemented ISO 9001 Compliant and NQA-1 Compliant, Quality Process System allows us to assist you with all your quality compliance requirements. Our NQA-1 program provides you with a **Qualified Supplier** of all "Safety Related" Quality Levels 1, 2, & 3 Pipe, Valves, Fittings, Flanges, Instrumentation, Piping Accessories, and Structural Steel. In addition, **PSP's** computer based imaging system instantly generates your **Material Test Reports**. Supplemental testing and third party inspections such as UT, LP, MP and PMI are available for more complex projects.

## AUTOMATION

### Puget Sound Pipe & Supply is a full service Automation Center

**Electric**  
Jamesbury/Metso  
Milwaukee Controls  
Crane  
Valvcon  
Betts

**Pneumatic**  
Jamesbury/Metso  
Milwaukee Controls  
Hy-Tork  
Kotrok

**Solenoids**  
ASCO

## "IN HOUSE" SHOP SERVICES

- State of the art Plasma cutter
- (up to 24" double randoms) • cut grooving
- roll grooving (Vicaltic VE436MC)
- threading • pipe wrapping • beveling
- flange facing • taper boring

## ACCESSORIES

**Nipples**  
Pipe Nipples All Grades

**Hangers, Strut  
& All Thread Rod**  
Beck, Westbrook, Merit Brass  
Edmund Gray, Phoenix/Capitol  
Anvil, PHD, Holdrite, Snappitz  
Babbitt Steam Specialty Co.,  
Keeckley, Suro, Mueller Steam  
Sarco, Armstrong  
KEA Metal Ring Co.  
Englehard Corp.

**Chain Wheels**  
Keeckley, Lamons, Flexitallie

**Strainers**  
Bronze, Iron & Steel

**Traps**  
Sarco, Armstrong

**Backing Rings**  
KEA Metal Ring Co.

**Silbraze Rings**  
Englehard Corp.

**Gaskets**  
Non-Ashbestos, Red Rubber  
Phenolic & Spiral Wound  
Neoprene

**Studs, Nuts & Bolts**  
Commercial & Specialty  
Grades

**Flex Connectors**  
Expansion Joints, Pump  
Connector Hose Assemblies  
Pipe Guides

**Pressure &  
Temperature Gauges**  
Tertrac

**Backflow Preventers**  
Combraco/Apollo, Watts, Wilkens

**Balancing Valves**  
Armstrong, Bell & Gossett, T&A

**Additional Items**  
Restorscal, Wolverine Joining  
Technologies, Wingert, Pot Feeders,  
Camlock-Dixon Valve and Coupling,  
Zurn Drains

(R4/13)

All branches of Puget Sound Pipe & Supply have access to the manufacturers listed, but may not maintain in-house inventories. In addition, we have access to many specialty manufacturers that are not listed individually.